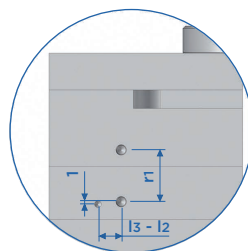
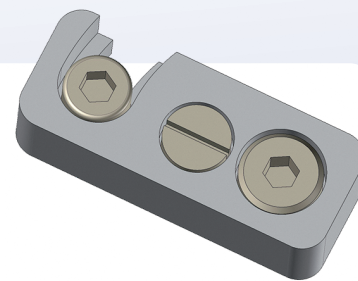
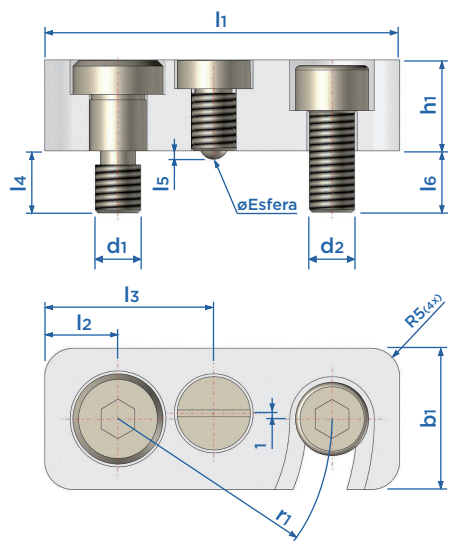
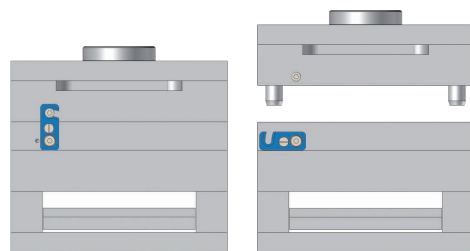


TRAVA DE MOLDE - PZ73



Montagem

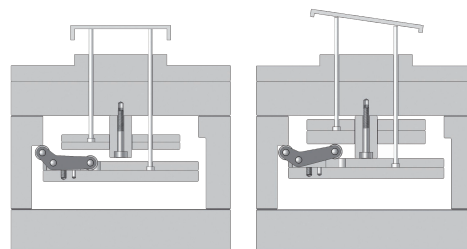
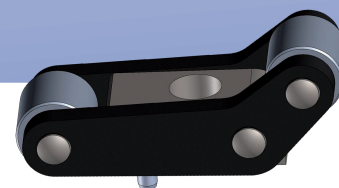
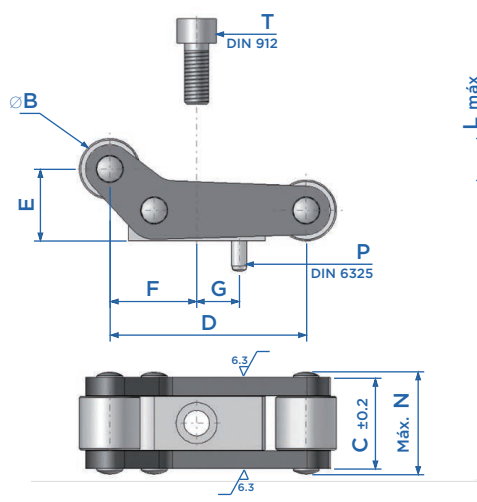


PZ73	∅ Esfera	d1	d2	r1	l2	l3	l4	l5	l6	h1	b1	l1
12x20x50	3	M6	M6	30	10	24	9	0.9	8	12	20	50
16x25x63	5	M8	M8	38	13	30	11	1.5	11	16	25	63
20x32x80	6	M10	M10	48	15	35	13	2	13	20	32	80

ACELERADOR DE PLACA - PEP

Material: DIN 1.2510/ DIN 1.0503

Dureza: 53 - 57 HRC



Código	A	B	C	D	E	F	G	H	L	M	N	P	T	MAX. FORCE
PEP200813	20	8	13.2	25.8	9.4	11.4	6	13.6	5.5	5	15	∅2.5x10	M3x12	125Kg
PEP251016	25	10	16	32.3	11.8	14.3	7	17	6.8	6	18.5	∅3x12	M4x16	250Kg
PEP371522	37.5	15	22	48.5	17.7	21.5	10.5	25.5	10.2	8	25	∅4x16	M6x25	350Kg
PEP502030	50	20	30	64.6	23.6	28.6	14	34	13.6	10	34	∅5x20	M8x30	800Kg