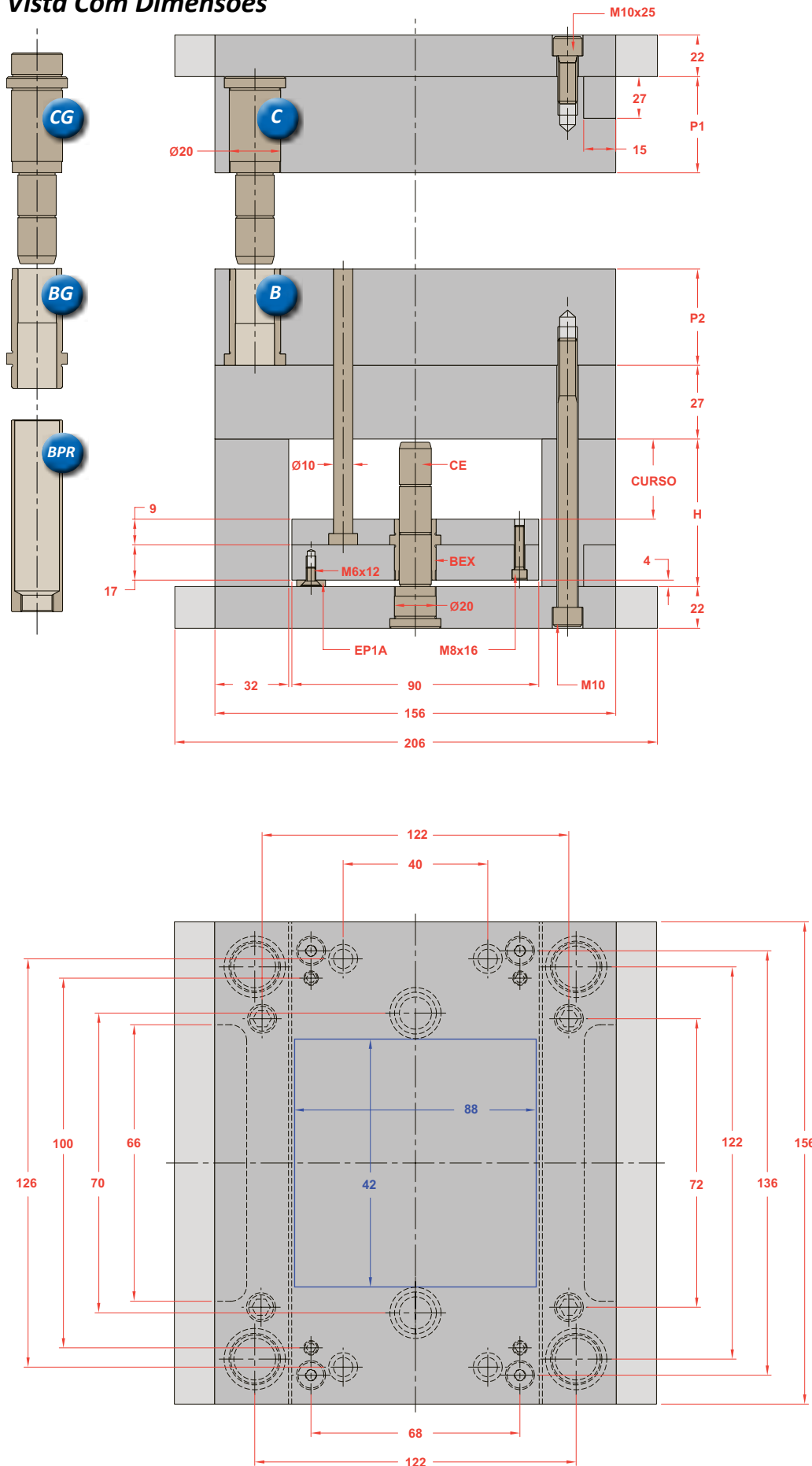
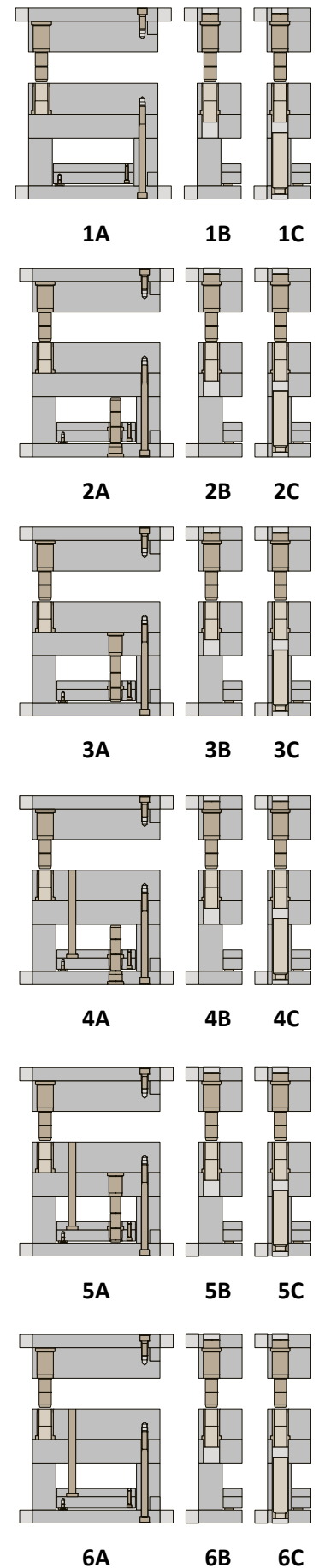


Vista Com Dimensões



Opções na Montagem



*Os novos Polimolds são fornecidos com uma coluna de diâmetro menor na ponta em substituição ao furo deslocado

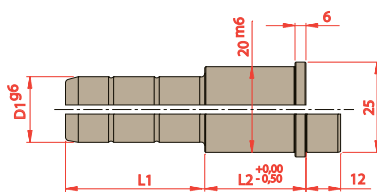
| Sub Série | Placas Cavidades | | Componentes das Placas Cavidades | | | |
|-----------|------------------|----|----------------------------------|---------------|--------------|--------------|
| | P1 | P2 | Coluna (1 pç) | Coluna (3 pç) | Bucha (1 pç) | Bucha (3 pç) |
| 1 | 22 | 22 | C/CG 14022022 | C/CG 15022022 | B/BG 14022 | B/BG 15022 |
| 2 | 22 | 27 | C/CG 14022022 | C/CG 15022022 | B/BG 14027 | B/BG 15027 |
| 3 | 22 | 36 | C/CG 14022036 | C/CG 15022036 | B/BG 14036 | B/BG 15036 |
| 4 | 22 | 46 | C/CG 14022036 | C/CG 15022036 | B/BG 14046 | B/BG 15046 |
| 5 | 22 | 56 | C/CG 14022056 | C/CG 15022056 | B/BG 14056 | B/BG 15056 |
| 6 | 22 | 66 | C/CG 14022056 | C/CG 15022056 | B/BG 14066 | B/BG 15066 |
| 7 | 27 | 22 | C/CG 14027022 | C/CG 15027022 | B/BG 14022 | B/BG 15022 |
| 8 | 27 | 27 | C/CG 14027022 | C/CG 15027022 | B/BG 14027 | B/BG 15027 |
| 9 | 27 | 36 | C/CG 14027036 | C/CG 15027036 | B/BG 14036 | B/BG 15036 |
| 10 | 27 | 46 | C/CG 14027036 | C/CG 15027036 | B/BG 14046 | B/BG 15046 |
| 11 | 27 | 56 | C/CG 14027056 | C/CG 15027056 | B/BG 14056 | B/BG 15056 |
| 12 | 27 | 66 | C/CG 14027056 | C/CG 15027056 | B/BG 14066 | B/BG 15066 |
| 13 | 36 | 22 | C/CG 14036022 | C/CG 15036022 | B/BG 14022 | B/BG 15022 |
| 14 | 36 | 27 | C/CG 14036022 | C/CG 15036022 | B/BG 14027 | B/BG 15027 |
| 15 | 36 | 36 | C/CG 14036036 | C/CG 15036036 | B/BG 14036 | B/BG 15036 |
| 16 | 36 | 46 | C/CG 14036036 | C/CG 15036036 | B/BG 14046 | B/BG 15046 |
| 17 | 36 | 56 | C/CG 14036056 | C/CG 15036056 | B/BG 14056 | B/BG 15056 |
| 18 | 36 | 66 | C/CG 14036056 | C/CG 15036056 | B/BG 14066 | B/BG 15066 |

| Sub Série | Placas Cavidades | | Componentes das Placas Cavidades | | | |
|-----------|------------------|----|----------------------------------|---------------|--------------|--------------|
| | P1 | P2 | Coluna (1 pç) | Coluna (3 pç) | Bucha (1 pç) | Bucha (3 pç) |
| 19 | 46 | 22 | C/CG 14046022 | C/CG 15046022 | B/BG 14022 | B/BG 15022 |
| 20 | 46 | 27 | C/CG 14046022 | C/CG 15046022 | B/BG 14027 | B/BG 15027 |
| 21 | 46 | 36 | C/CG 14046036 | C/CG 15046036 | B/BG 14036 | B/BG 15036 |
| 22 | 46 | 46 | C/CG 14046036 | C/CG 15046036 | B/BG 14046 | B/BG 15046 |
| 23 | 46 | 56 | C/CG 14046056 | C/CG 15046056 | B/BG 14056 | B/BG 15056 |
| 24 | 46 | 66 | C/CG 14046056 | C/CG 15046056 | B/BG 14066 | B/BG 15066 |
| 25 | 56 | 22 | C/CG 14056022 | C/CG 15056022 | B/BG 14022 | B/BG 15022 |
| 26 | 56 | 27 | C/CG 14056022 | C/CG 15056022 | B/BG 14027 | B/BG 15027 |
| 27 | 56 | 36 | C/CG 14056036 | C/CG 15056036 | B/BG 14036 | B/BG 15036 |
| 28 | 56 | 46 | C/CG 14056036 | C/CG 15056036 | B/BG 14046 | B/BG 15046 |
| 29 | 56 | 56 | C/CG 14056056 | C/CG 15056056 | B/BG 14056 | B/BG 15056 |
| 30 | 56 | 66 | C/CG 14056056 | C/CG 15056056 | B/BG 14066 | B/BG 15066 |
| 31 | 66 | 22 | C/CG 14066022 | C/CG 15066022 | B/BG 14022 | B/BG 15022 |
| 32 | 66 | 27 | C/CG 14066022 | C/CG 15066022 | B/BG 14027 | B/BG 15027 |
| 33 | 66 | 36 | C/CG 14066036 | C/CG 15066036 | B/BG 14036 | B/BG 15036 |
| 34 | 66 | 46 | C/CG 14066036 | C/CG 15066036 | B/BG 14046 | B/BG 15046 |
| 35 | 66 | 56 | C/CG 14066056 | C/CG 15066056 | B/BG 14056 | B/BG 15056 |
| 36 | 66 | 66 | C/CG 14066056 | C/CG 15066056 | B/BG 14066 | B/BG 15066 |

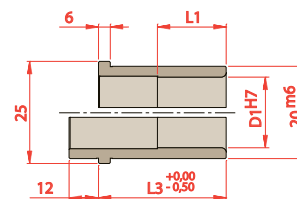
Especificação do Conjunto Extrator

| Dimensões de Curso | | | Componentes do Conjunto Extrator | | | | |
|--------------------|------|----|----------------------------------|-------------|----------|------------|----------|
| Curso | Dim. | H | Coluna (PBI) | Coluna (PS) | Bucha | Bucha Guia | Parafuso |
| 1 | 16 | 46 | CE 15022046 | CE 15027046 | BEX 1526 | BPR 15064 | M10x100 |
| 2 | 26 | 56 | CE 15022056 | CE 15027056 | BEX 1526 | BPR 15074 | M10x110 |
| 3 | 46 | 76 | CE 15022076 | CE 15027076 | BEX 1526 | BPR 15094 | M10x130 |

Componentes



| D1 | L2 | L1 | | |
|----|-----|-----|-----|-----|
| | | 022 | 036 | 056 |
| 14 | 022 | | | |
| | 027 | | | |
| 15 | 036 | | | |
| | 046 | | | |
| | 056 | | | |
| | 066 | | | |



| D1 | L1 | L3 |
|----|-----|-----|
| | | |
| 14 | 027 | 027 |
| | 036 | 036 |
| 15 | 046 | 046 |
| | 050 | 056 |
| | 050 | 066 |

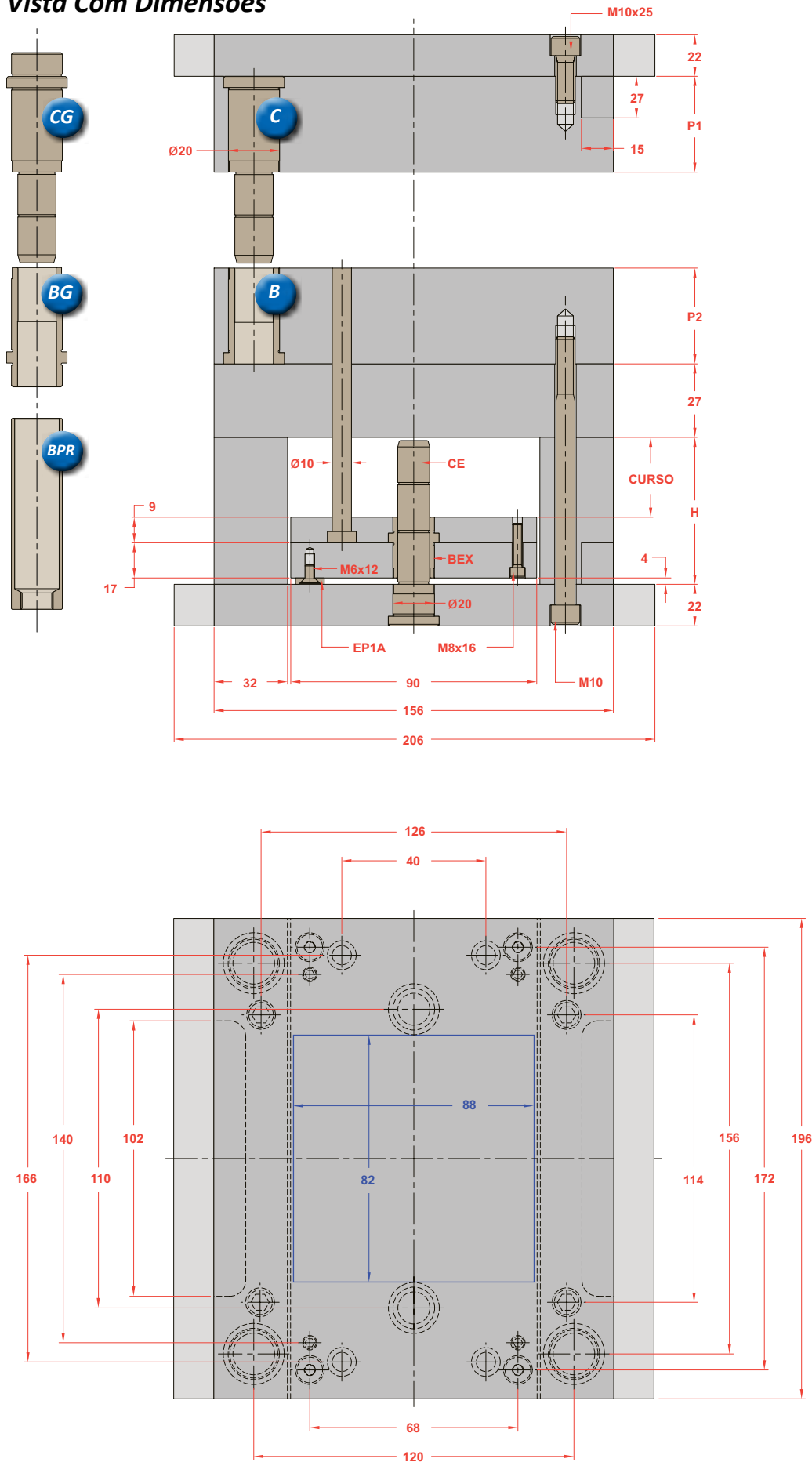
Para solicitar Colunas

Prefixo D1 L2 L1
 C ou CG

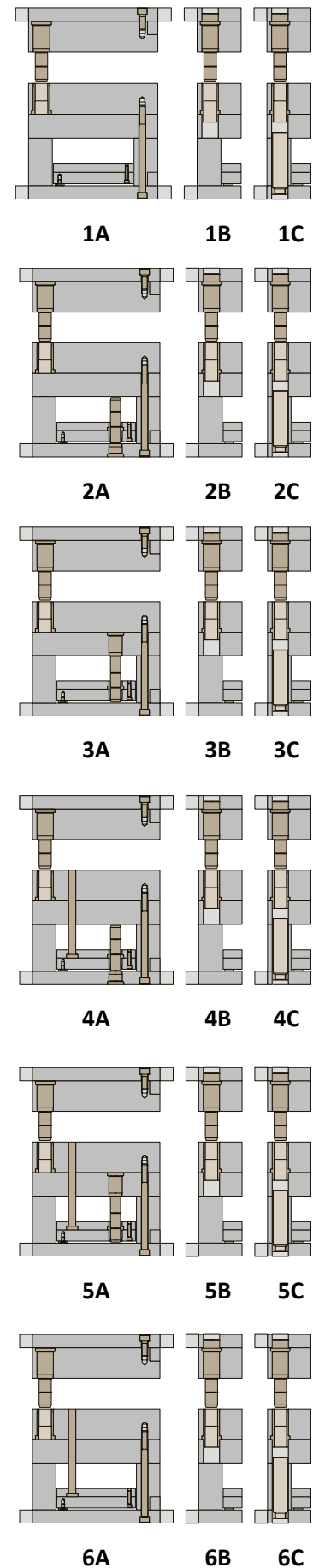
Para solicitar Buchas

Prefixo D1 L3
 B ou BG

Vista Com Dimensões



Opções na Montagem



*Os novos Polimolds são fornecidos com uma coluna de diâmetro menor na ponta em substituição ao furo deslocado

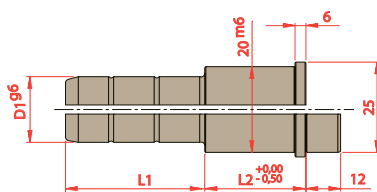
| Sub Série | Placas Cavidades | | Componentes das Placas Cavidades | | | |
|-----------|------------------|----|----------------------------------|---------------|--------------|--------------|
| | P1 | P2 | Coluna (1 pç) | Coluna (3 pç) | Bucha (1 pç) | Bucha (3 pç) |
| 1 | 22 | 22 | C/CG 14022022 | C/CG 15022022 | B/BG 14022 | B/BG 15022 |
| 2 | 22 | 27 | C/CG 14022022 | C/CG 15022022 | B/BG 14027 | B/BG 15027 |
| 3 | 22 | 36 | C/CG 14022036 | C/CG 15022036 | B/BG 14036 | B/BG 15036 |
| 4 | 22 | 46 | C/CG 14022036 | C/CG 15022036 | B/BG 14046 | B/BG 15046 |
| 5 | 22 | 56 | C/CG 14022056 | C/CG 15022056 | B/BG 14056 | B/BG 15056 |
| 6 | 22 | 66 | C/CG 14022056 | C/CG 15022056 | B/BG 14066 | B/BG 15066 |
| 7 | 27 | 22 | C/CG 14027022 | C/CG 15027022 | B/BG 14022 | B/BG 15022 |
| 8 | 27 | 27 | C/CG 14027022 | C/CG 15027022 | B/BG 14027 | B/BG 15027 |
| 9 | 27 | 36 | C/CG 14027036 | C/CG 15027036 | B/BG 14036 | B/BG 15036 |
| 10 | 27 | 46 | C/CG 14027036 | C/CG 15027036 | B/BG 14046 | B/BG 15046 |
| 11 | 27 | 56 | C/CG 14027056 | C/CG 15027056 | B/BG 14056 | B/BG 15056 |
| 12 | 27 | 66 | C/CG 14027056 | C/CG 15027056 | B/BG 14066 | B/BG 15066 |
| 13 | 36 | 22 | C/CG 14036022 | C/CG 15036022 | B/BG 14022 | B/BG 15022 |
| 14 | 36 | 27 | C/CG 14036022 | C/CG 15036022 | B/BG 14027 | B/BG 15027 |
| 15 | 36 | 36 | C/CG 14036036 | C/CG 15036036 | B/BG 14036 | B/BG 15036 |
| 16 | 36 | 46 | C/CG 14036036 | C/CG 15036036 | B/BG 14046 | B/BG 15046 |
| 17 | 36 | 56 | C/CG 14036056 | C/CG 15036056 | B/BG 14056 | B/BG 15056 |
| 18 | 36 | 66 | C/CG 14036056 | C/CG 15036056 | B/BG 14066 | B/BG 15066 |

| Sub Série | Placas Cavidades | | Componentes das Placas Cavidades | | | |
|-----------|------------------|----|----------------------------------|---------------|--------------|--------------|
| | P1 | P2 | Coluna (1 pç) | Coluna (3 pç) | Bucha (1 pç) | Bucha (3 pç) |
| 19 | 46 | 22 | C/CG 14046022 | C/CG 15046022 | B/BG 14022 | B/BG 15022 |
| 20 | 46 | 27 | C/CG 14046022 | C/CG 15046022 | B/BG 14027 | B/BG 15027 |
| 21 | 46 | 36 | C/CG 14046036 | C/CG 15046036 | B/BG 14036 | B/BG 15036 |
| 22 | 46 | 46 | C/CG 14046036 | C/CG 15046036 | B/BG 14046 | B/BG 15046 |
| 23 | 46 | 56 | C/CG 14046056 | C/CG 15046056 | B/BG 14056 | B/BG 15056 |
| 24 | 46 | 66 | C/CG 14046056 | C/CG 15046056 | B/BG 14066 | B/BG 15066 |
| 25 | 56 | 22 | C/CG 14056022 | C/CG 15056022 | B/BG 14022 | B/BG 15022 |
| 26 | 56 | 27 | C/CG 14056022 | C/CG 15056022 | B/BG 14027 | B/BG 15027 |
| 27 | 56 | 36 | C/CG 14056036 | C/CG 15056036 | B/BG 14036 | B/BG 15036 |
| 28 | 56 | 46 | C/CG 14056036 | C/CG 15056036 | B/BG 14046 | B/BG 15046 |
| 29 | 56 | 56 | C/CG 14056056 | C/CG 15056056 | B/BG 14056 | B/BG 15056 |
| 30 | 56 | 66 | C/CG 14056056 | C/CG 15056056 | B/BG 14066 | B/BG 15066 |
| 31 | 66 | 22 | C/CG 14066022 | C/CG 15066022 | B/BG 14022 | B/BG 15022 |
| 32 | 66 | 27 | C/CG 14066022 | C/CG 15066022 | B/BG 14027 | B/BG 15027 |
| 33 | 66 | 36 | C/CG 14066036 | C/CG 15066036 | B/BG 14036 | B/BG 15036 |
| 34 | 66 | 46 | C/CG 14066036 | C/CG 15066036 | B/BG 14046 | B/BG 15046 |
| 35 | 66 | 56 | C/CG 14066056 | C/CG 15066056 | B/BG 14056 | B/BG 15056 |
| 36 | 66 | 66 | C/CG 14066056 | C/CG 15066056 | B/BG 14066 | B/BG 15066 |

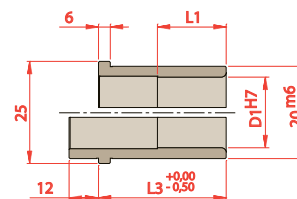
Especificação do Conjunto Extrator

| Dimensões de Curso | | | Componentes do Conjunto Extrator | | | | |
|--------------------|------|----|----------------------------------|-------------|----------|------------|----------|
| Curso | Dim. | H | Coluna (PBI) | Coluna (PS) | Bucha | Bucha Guia | Parafuso |
| 1 | 16 | 46 | CE 15022046 | CE 15027046 | BEX 1526 | BPR 15064 | M10x100 |
| 2 | 26 | 56 | CE 15022056 | CE 15027056 | BEX 1526 | BPR 15074 | M10x110 |
| 3 | 46 | 76 | CE 15022076 | CE 15027076 | BEX 1526 | BPR 15094 | M10x130 |

Componentes



| D1 | L2 | L1 | | |
|----|-----|-----|-----|-----|
| | | 022 | 036 | 056 |
| 14 | 022 | | | |
| | 027 | | | |
| 15 | 036 | | | |
| | 046 | | | |
| | 056 | | | |
| | 066 | | | |



| D1 | L1 | L3 |
|----|-----|-----|
| | | |
| 14 | 027 | 027 |
| | 036 | 036 |
| 15 | 046 | 046 |
| | 050 | 056 |
| | 050 | 066 |

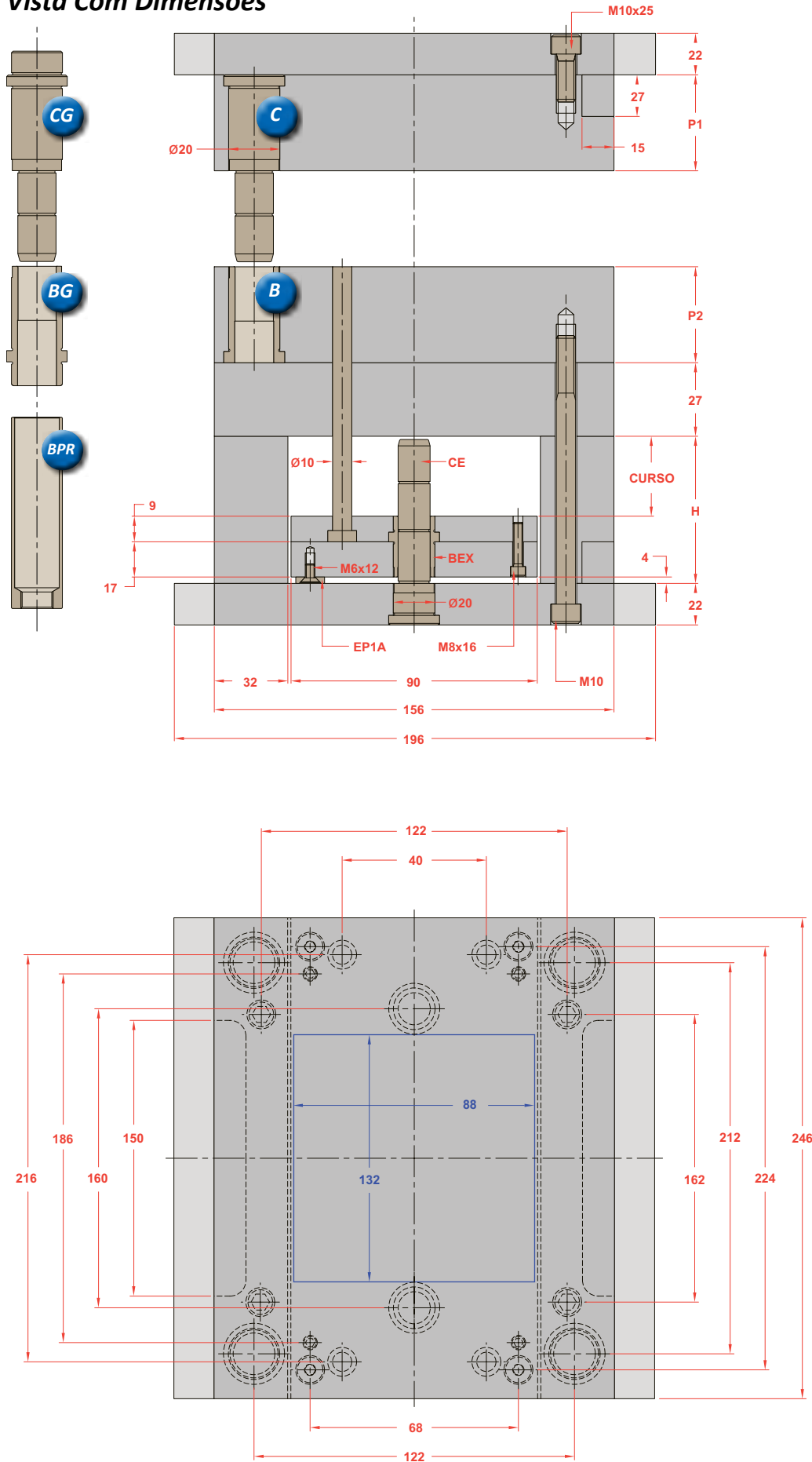
Para solicitar Colunas

Prefixo D1 L2 L1
 C ou CG

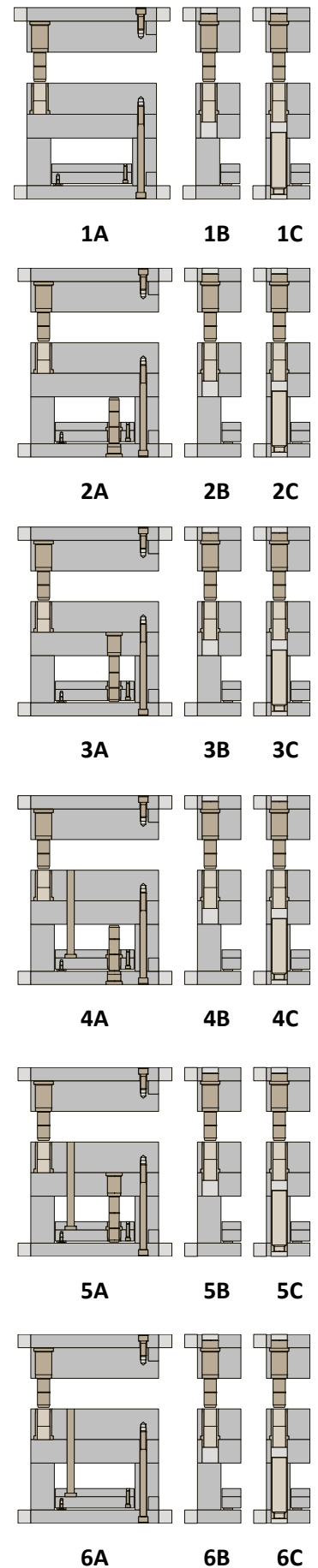
Para solicitar Buchas

Prefixo D1 L3
 B ou BG

Vista Com Dimensões



Opções na Montagem



*Os novos Polimolds são fornecidos com uma coluna de diâmetro menor na ponta em substituição ao furo deslocado

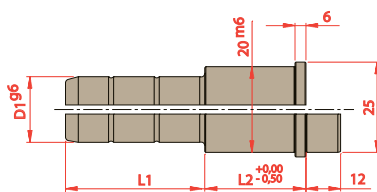
| Sub Série | Placas Cavidades | | Componentes das Placas Cavidades | | | |
|-----------|------------------|----|----------------------------------|---------------|--------------|--------------|
| | P1 | P2 | Coluna (1 pç) | Coluna (3 pç) | Bucha (1 pç) | Bucha (3 pç) |
| 1 | 22 | 22 | C/CG 14022022 | C/CG 15022022 | B/BG 14022 | B/BG 15022 |
| 2 | 22 | 27 | C/CG 14022022 | C/CG 15022022 | B/BG 14027 | B/BG 15027 |
| 3 | 22 | 36 | C/CG 14022036 | C/CG 15022036 | B/BG 14036 | B/BG 15036 |
| 4 | 22 | 46 | C/CG 14022036 | C/CG 15022036 | B/BG 14046 | B/BG 15046 |
| 5 | 22 | 56 | C/CG 14022056 | C/CG 15022056 | B/BG 14056 | B/BG 15056 |
| 6 | 22 | 66 | C/CG 14022056 | C/CG 15022056 | B/BG 14066 | B/BG 15066 |
| 7 | 27 | 22 | C/CG 14027022 | C/CG 15027022 | B/BG 14022 | B/BG 15022 |
| 8 | 27 | 27 | C/CG 14027022 | C/CG 15027022 | B/BG 14027 | B/BG 15027 |
| 9 | 27 | 36 | C/CG 14027036 | C/CG 15027036 | B/BG 14036 | B/BG 15036 |
| 10 | 27 | 46 | C/CG 14027036 | C/CG 15027036 | B/BG 14046 | B/BG 15046 |
| 11 | 27 | 56 | C/CG 14027056 | C/CG 15027056 | B/BG 14056 | B/BG 15056 |
| 12 | 27 | 66 | C/CG 14027056 | C/CG 15027056 | B/BG 14066 | B/BG 15066 |
| 13 | 36 | 22 | C/CG 14036022 | C/CG 15036022 | B/BG 14022 | B/BG 15022 |
| 14 | 36 | 27 | C/CG 14036022 | C/CG 15036022 | B/BG 14027 | B/BG 15027 |
| 15 | 36 | 36 | C/CG 14036036 | C/CG 15036036 | B/BG 14036 | B/BG 15036 |
| 16 | 36 | 46 | C/CG 14036036 | C/CG 15036036 | B/BG 14046 | B/BG 15046 |
| 17 | 36 | 56 | C/CG 14036056 | C/CG 15036056 | B/BG 14056 | B/BG 15056 |
| 18 | 36 | 66 | C/CG 14036056 | C/CG 15036056 | B/BG 14066 | B/BG 15066 |

| Sub Série | Placas Cavidades | | Componentes das Placas Cavidades | | | |
|-----------|------------------|----|----------------------------------|---------------|--------------|--------------|
| | P1 | P2 | Coluna (1 pç) | Coluna (3 pç) | Bucha (1 pç) | Bucha (3 pç) |
| 19 | 46 | 22 | C/CG 14046022 | C/CG 15046022 | B/BG 14022 | B/BG 15022 |
| 20 | 46 | 27 | C/CG 14046022 | C/CG 15046022 | B/BG 14027 | B/BG 15027 |
| 21 | 46 | 36 | C/CG 14046036 | C/CG 15046036 | B/BG 14036 | B/BG 15036 |
| 22 | 46 | 46 | C/CG 14046036 | C/CG 15046036 | B/BG 14046 | B/BG 15046 |
| 23 | 46 | 56 | C/CG 14046056 | C/CG 15046056 | B/BG 14056 | B/BG 15056 |
| 24 | 46 | 66 | C/CG 14046056 | C/CG 15046056 | B/BG 14066 | B/BG 15066 |
| 25 | 56 | 22 | C/CG 14056022 | C/CG 15056022 | B/BG 14022 | B/BG 15022 |
| 26 | 56 | 27 | C/CG 14056022 | C/CG 15056022 | B/BG 14027 | B/BG 15027 |
| 27 | 56 | 36 | C/CG 14056036 | C/CG 15056036 | B/BG 14036 | B/BG 15036 |
| 28 | 56 | 46 | C/CG 14056036 | C/CG 15056036 | B/BG 14046 | B/BG 15046 |
| 29 | 56 | 56 | C/CG 14056056 | C/CG 15056056 | B/BG 14056 | B/BG 15056 |
| 30 | 56 | 66 | C/CG 14056056 | C/CG 15056056 | B/BG 14066 | B/BG 15066 |
| 31 | 66 | 22 | C/CG 14066022 | C/CG 15066022 | B/BG 14022 | B/BG 15022 |
| 32 | 66 | 27 | C/CG 14066022 | C/CG 15066022 | B/BG 14027 | B/BG 15027 |
| 33 | 66 | 36 | C/CG 14066036 | C/CG 15066036 | B/BG 14036 | B/BG 15036 |
| 34 | 66 | 46 | C/CG 14066036 | C/CG 15066036 | B/BG 14046 | B/BG 15046 |
| 35 | 66 | 56 | C/CG 14066056 | C/CG 15066056 | B/BG 14056 | B/BG 15056 |
| 36 | 66 | 66 | C/CG 14066056 | C/CG 15066056 | B/BG 14066 | B/BG 15066 |

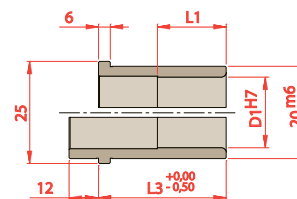
Especificação do Conjunto Extrator

| Dimensões de Curso | | | Componentes do Conjunto Extrator | | | | |
|--------------------|------|----|----------------------------------|-------------|----------|------------|----------|
| Curso | Dim. | H | Coluna (PBI) | Coluna (PS) | Bucha | Bucha Guia | Parafuso |
| 1 | 16 | 46 | CE 15022046 | CE 15027046 | BEX 1526 | BPR 15064 | M10x100 |
| 2 | 26 | 56 | CE 15022056 | CE 15027056 | BEX 1526 | BPR 15074 | M10x110 |
| 3 | 46 | 76 | CE 15022076 | CE 15027076 | BEX 1526 | BPR 15094 | M10x130 |

Componentes



| D1 | L2 | L1 | | |
|----|-----|-----|-----|-----|
| | | 022 | 036 | 056 |
| 14 | 022 | | | |
| | 027 | | | |
| 15 | 036 | | | |
| | 046 | | | |
| | 056 | | | |
| | 066 | | | |



| D1 | L1 | L3 | |
|----|-----|-----|-----|
| | | | 022 |
| 14 | 027 | 027 | |
| | 036 | 036 | |
| 15 | 046 | 046 | |
| | 050 | 056 | |
| | 050 | 066 | |

Para solicitar Colunas

Prefixo D1 L2 L1
 C ou CG

Para solicitar Buchas

Prefixo D1 L3
 B ou BG