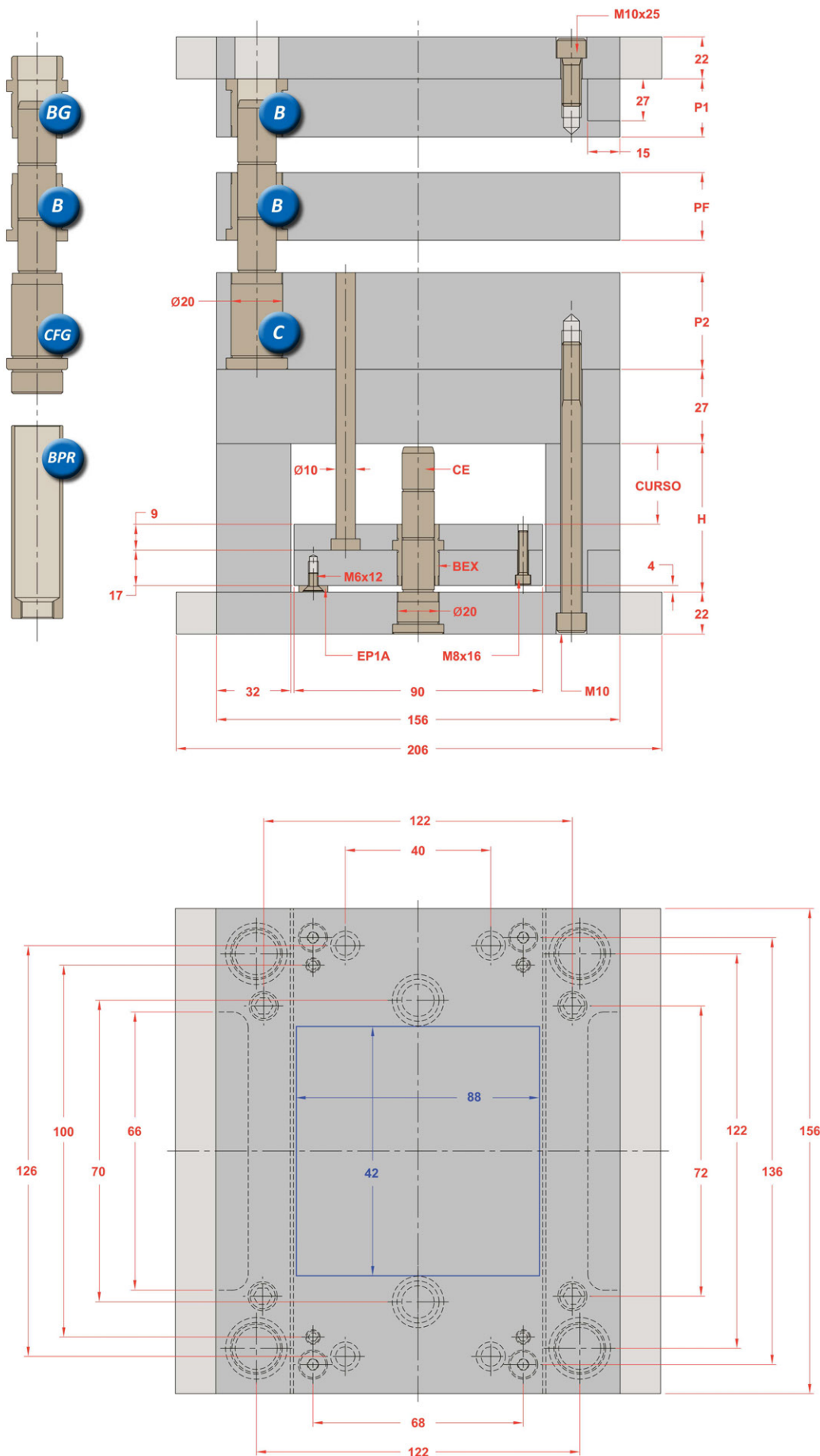
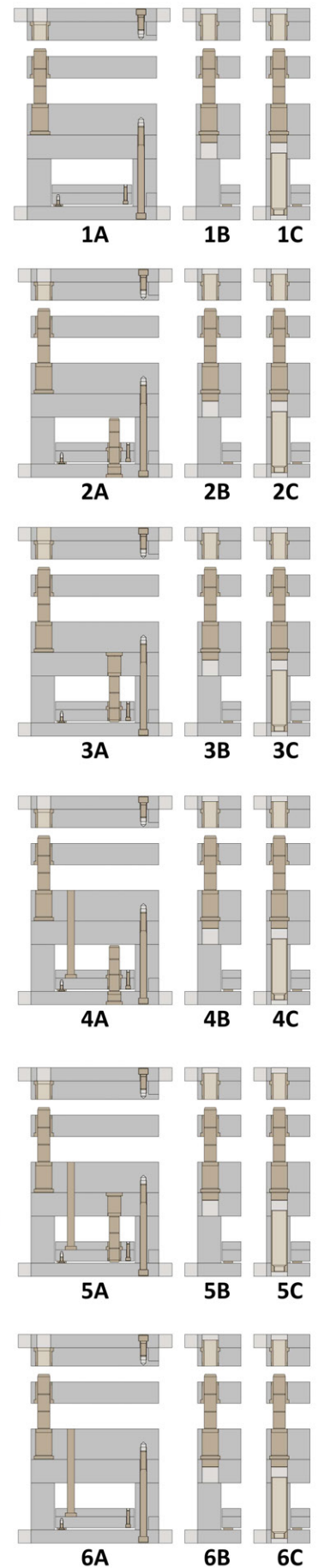


Vista Com Dimensões



Opções na Montagem



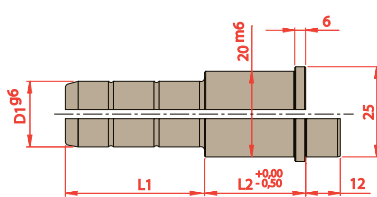
*Os novos Polimolds são fornecidos com uma coluna de diâmetro menor na ponta em substituição ao furo deslocado

Sub Série	Placas Cavidades			Componentes das Placas Cavidades					
	P1	PF	P2	Bucha P1 (1 pç)	Bucha P1 (1 pç)	Bucha PF (1 pç)	Bucha PF (3 pç)	Coluna (1 pç)	Coluna (3 pç)
1	22	22	27	B/BG 14022	B/BG 15022	B14022	B15022	CF/CFG 14027065	CF/CFG 15027065
2	27	22	27	B/BG 14027	B/BG 15027	B14022	B15022	CF/CFG 14027065	CF/CFG 15027065
3	36	22	27	B/BG 14036	B/BG 15036	B14022	B15022	CF/CFG 14027065	CF/CFG 15027065
4	46	22	27	B/BG 14046	B/BG 15046	B14022	B15022	CF/CFG 14027084	CF/CFG 15027084
5	56	22	27	B/BG 14056	B/BG 15056	B14022	B15022	CF/CFG 14027084	CF/CFG 15027084
6	66	22	27	B/BG 14066	B/BG 15066	B14022	B15022	CF/CFG 14027102	CF/CFG 15027102
7	22	27	36	B/BG 14022	B/BG 15022	B14027	B15027	CF/CFG 14036065	CF/CFG 15036065
8	27	27	36	B/BG 14027	B/BG 15027	B14027	B15027	CF/CFG 14036065	CF/CFG 15036065
9	36	27	36	B/BG 14036	B/BG 15036	B14027	B15027	CF/CFG 14036084	CF/CFG 15036084
10	46	27	36	B/BG 14046	B/BG 15046	B14027	B15027	CF/CFG 14036084	CF/CFG 15036084
11	56	27	36	B/BG 14056	B/BG 15056	B14027	B15027	CF/CFG 14036102	CF/CFG 15036102
12	66	27	36	B/BG 14066	B/BG 15066	B14027	B15027	CF/CFG 14036102	CF/CFG 15036102
13	22	36	46	B/BG 14022	B/BG 15022	B14036	B15036	CF/CFG 14046065	CF/CFG 15046065
14	27	36	46	B/BG 14027	B/BG 15027	B14036	B15036	CF/CFG 14046084	CF/CFG 15046084
15	36	36	46	B/BG 14036	B/BG 15036	B14036	B15036	CF/CFG 14046084	CF/CFG 15046084
16	46	36	46	B/BG 14046	B/BG 15046	B14036	B15036	CF/CFG 14046102	CF/CFG 15046102
17	56	36	46	B/BG 14056	B/BG 15056	B14036	B15036	CF/CFG 14046102	CF/CFG 15046102
18	66	36	46	B/BG 14066	B/BG 15066	B14036	B15036	CF/CFG 14046122	CF/CFG 15046122
19	22	46	56	B/BG 14022	B/BG 15022	B14046	B15046	CF/CFG 14056084	CF/CFG 15056084
20	27	46	56	B/BG 14027	B/BG 15027	B14046	B15046	CF/CFG 14056084	CF/CFG 15056084
21	36	46	56	B/BG 14036	B/BG 15036	B14046	B15046	CF/CFG 14056102	CF/CFG 15056102
22	46	46	56	B/BG 14046	B/BG 15046	B14046	B15046	CF/CFG 14056102	CF/CFG 15056102
23	56	46	56	B/BG 14056	B/BG 15056	B14046	B15046	CF/CFG 14056122	CF/CFG 15056122
24	66	46	56	B/BG 14066	B/BG 15066	B14046	B15046	CF/CFG 14056122	CF/CFG 15056122
25	22	56	66	B/BG 14022	B/BG 15022	B14056	B15056	CF/CFG 14066084	CF/CFG 15066084
26	27	56	66	B/BG 14027	B/BG 15027	B14056	B15056	CF/CFG 14066102	CF/CFG 15066102
27	36	56	66	B/BG 14036	B/BG 15036	B14056	B15056	CF/CFG 14066102	CF/CFG 15066102
28	46	56	66	B/BG 14046	B/BG 15046	B14056	B15056	CF/CFG 14066122	CF/CFG 15066122
29	56	56	66	B/BG 14056	B/BG 15056	B14056	B15056	CF/CFG 14066122	CF/CFG 15066122
30	66	56	66	B/BG 14066	B/BG 15066	B14056	B15056	CF/CFG 14066140	CF/CFG 15066140

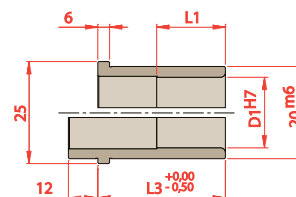
Especificação do Conjunto Extrator

Dimensões de Curso			Componentes do Conjunto Extrator				
Curso	Dim.	H	Coluna (PBI)	Coluna (PS)	Bucha	Bucha Guia	Parafuso
1	16	46	CE 15022046	CE 15027046	BEX 1526	BPR 15064	M10x100
2	26	56	CE 15022056	CE 15027056	BEX 1526	BPR 15074	M10x110
3	46	76	CE 15022076	CE 15027076	BEX 1526	BPR 15094	M10x130

Componentes



D1	L2	L1				
		065	084	102	122	140
14 15	027					
	036					
	046					
	056					
	066					



D1	L1	L3
14 15	022	022
	027	027
	036	036
	046	046
	050	056
050	066	

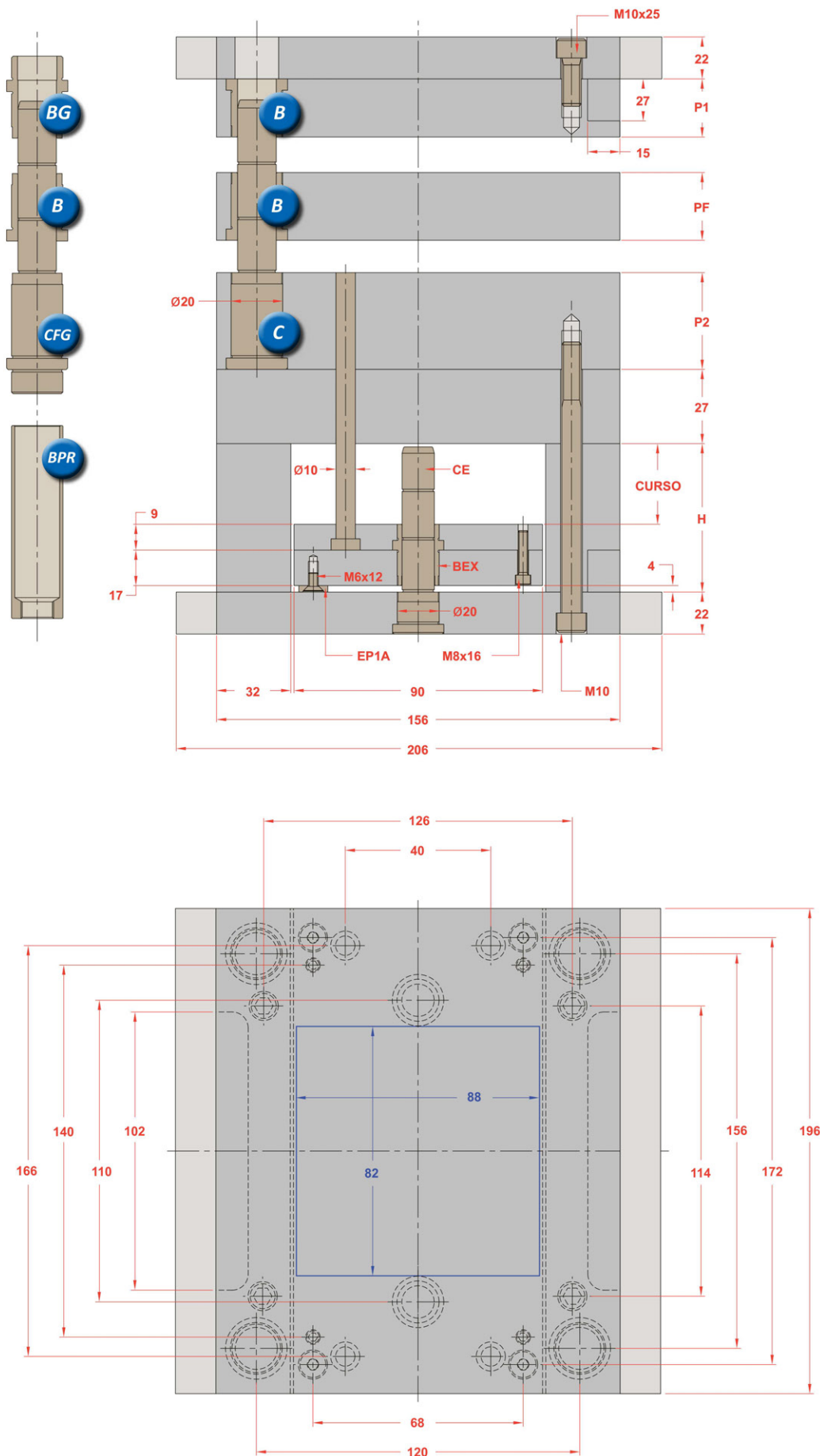
Para solicitar Colunas

Prefixo	D1	L2	L1
CF ou CFG	 	 	

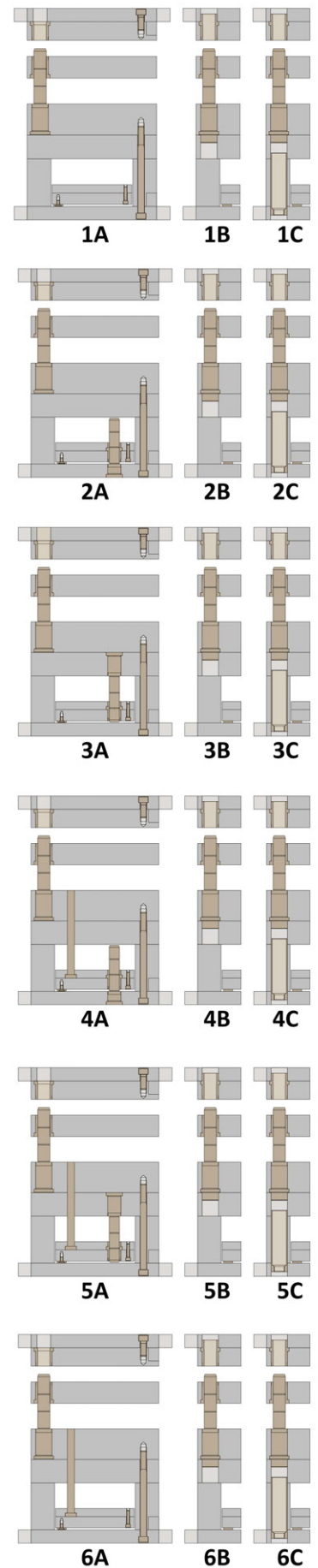
Para solicitar Buchas

Prefixo	D1	L3
B ou BG	 	

Vista Com Dimensões



Opções na Montagem



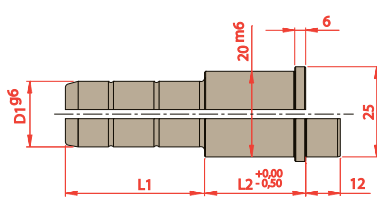
*Os novos Polimolds são fornecidos com uma coluna de diâmetro menor na ponta em substituição ao furo deslocado

Sub Série	Placas Cavidades			Componentes das Placas Cavidades					
	P1	PF	P2	Bucha P1 (1 pç)	Bucha P1 (1 pç)	Bucha PF (1 pç)	Bucha PF (3 pç)	Coluna (1 pç)	Coluna (3 pç)
1	22	22	27	B/BG 14022	B/BG 15022	B14022	B15022	CF/CFG 14027065	CF/CFG 15027065
2	27	22	27	B/BG 14027	B/BG 15027	B14022	B15022	CF/CFG 14027065	CF/CFG 15027065
3	36	22	27	B/BG 14036	B/BG 15036	B14022	B15022	CF/CFG 14027065	CF/CFG 15027065
4	46	22	27	B/BG 14046	B/BG 15046	B14022	B15022	CF/CFG 14027084	CF/CFG 15027084
5	56	22	27	B/BG 14056	B/BG 15056	B14022	B15022	CF/CFG 14027084	CF/CFG 15027084
6	66	22	27	B/BG 14066	B/BG 15066	B14022	B15022	CF/CFG 14027102	CF/CFG 15027102
7	22	27	36	B/BG 14022	B/BG 15022	B14027	B15027	CF/CFG 14036065	CF/CFG 15036065
8	27	27	36	B/BG 14027	B/BG 15027	B14027	B15027	CF/CFG 14036065	CF/CFG 15036065
9	36	27	36	B/BG 14036	B/BG 15036	B14027	B15027	CF/CFG 14036084	CF/CFG 15036084
10	46	27	36	B/BG 14046	B/BG 15046	B14027	B15027	CF/CFG 14036084	CF/CFG 15036084
11	56	27	36	B/BG 14056	B/BG 15056	B14027	B15027	CF/CFG 14036102	CF/CFG 15036102
12	66	27	36	B/BG 14066	B/BG 15066	B14027	B15027	CF/CFG 14036102	CF/CFG 15036102
13	22	36	46	B/BG 14022	B/BG 15022	B14036	B15036	CF/CFG 14046065	CF/CFG 15046065
14	27	36	46	B/BG 14027	B/BG 15027	B14036	B15036	CF/CFG 14046084	CF/CFG 15046084
15	36	36	46	B/BG 14036	B/BG 15036	B14036	B15036	CF/CFG 14046084	CF/CFG 15046084
16	46	36	46	B/BG 14046	B/BG 15046	B14036	B15036	CF/CFG 14046102	CF/CFG 15046102
17	56	36	46	B/BG 14056	B/BG 15056	B14036	B15036	CF/CFG 14046102	CF/CFG 15046102
18	66	36	46	B/BG 14066	B/BG 15066	B14036	B15036	CF/CFG 14046122	CF/CFG 15046122
19	22	46	56	B/BG 14022	B/BG 15022	B14046	B15046	CF/CFG 14056084	CF/CFG 15056084
20	27	46	56	B/BG 14027	B/BG 15027	B14046	B15046	CF/CFG 14056084	CF/CFG 15056084
21	36	46	56	B/BG 14036	B/BG 15036	B14046	B15046	CF/CFG 14056102	CF/CFG 15056102
22	46	46	56	B/BG 14046	B/BG 15046	B14046	B15046	CF/CFG 14056102	CF/CFG 15056102
23	56	46	56	B/BG 14056	B/BG 15056	B14046	B15046	CF/CFG 14056122	CF/CFG 15056122
24	66	46	56	B/BG 14066	B/BG 15066	B14046	B15046	CF/CFG 14056122	CF/CFG 15056122
25	22	56	66	B/BG 14022	B/BG 15022	B14056	B15056	CF/CFG 14066084	CF/CFG 15066084
26	27	56	66	B/BG 14027	B/BG 15027	B14056	B15056	CF/CFG 14066102	CF/CFG 15066102
27	36	56	66	B/BG 14036	B/BG 15036	B14056	B15056	CF/CFG 14066102	CF/CFG 15066102
28	46	56	66	B/BG 14046	B/BG 15046	B14056	B15056	CF/CFG 14066122	CF/CFG 15066122
29	56	56	66	B/BG 14056	B/BG 15056	B14056	B15056	CF/CFG 14066122	CF/CFG 15066122
30	66	56	66	B/BG 14066	B/BG 15066	B14056	B15056	CF/CFG 14066140	CF/CFG 15066140

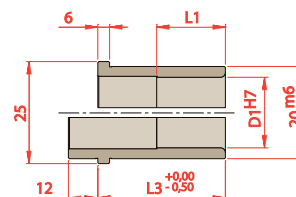
Especificação do Conjunto Extrator

Dimensões de Curso			Componentes do Conjunto Extrator				
Curso	Dim.	H	Coluna (PBI)	Coluna (PS)	Bucha	Bucha Guia	Parafuso
1	16	46	CE 15022046	CE 15027046	BEX 1526	BPR 15064	M10x100
2	26	56	CE 15022056	CE 15027056	BEX 1526	BPR 15074	M10x110
3	46	76	CE 15022076	CE 15027076	BEX 1526	BPR 15094	M10x130

Componentes



D1	L2	L1				
		065	084	102	122	140
14 15	027					
	036					
	046					
	056					
	066					



D1	L1	L3
14 15	022	022
	027	027
	036	036
	046	046
	050	056
	050	066

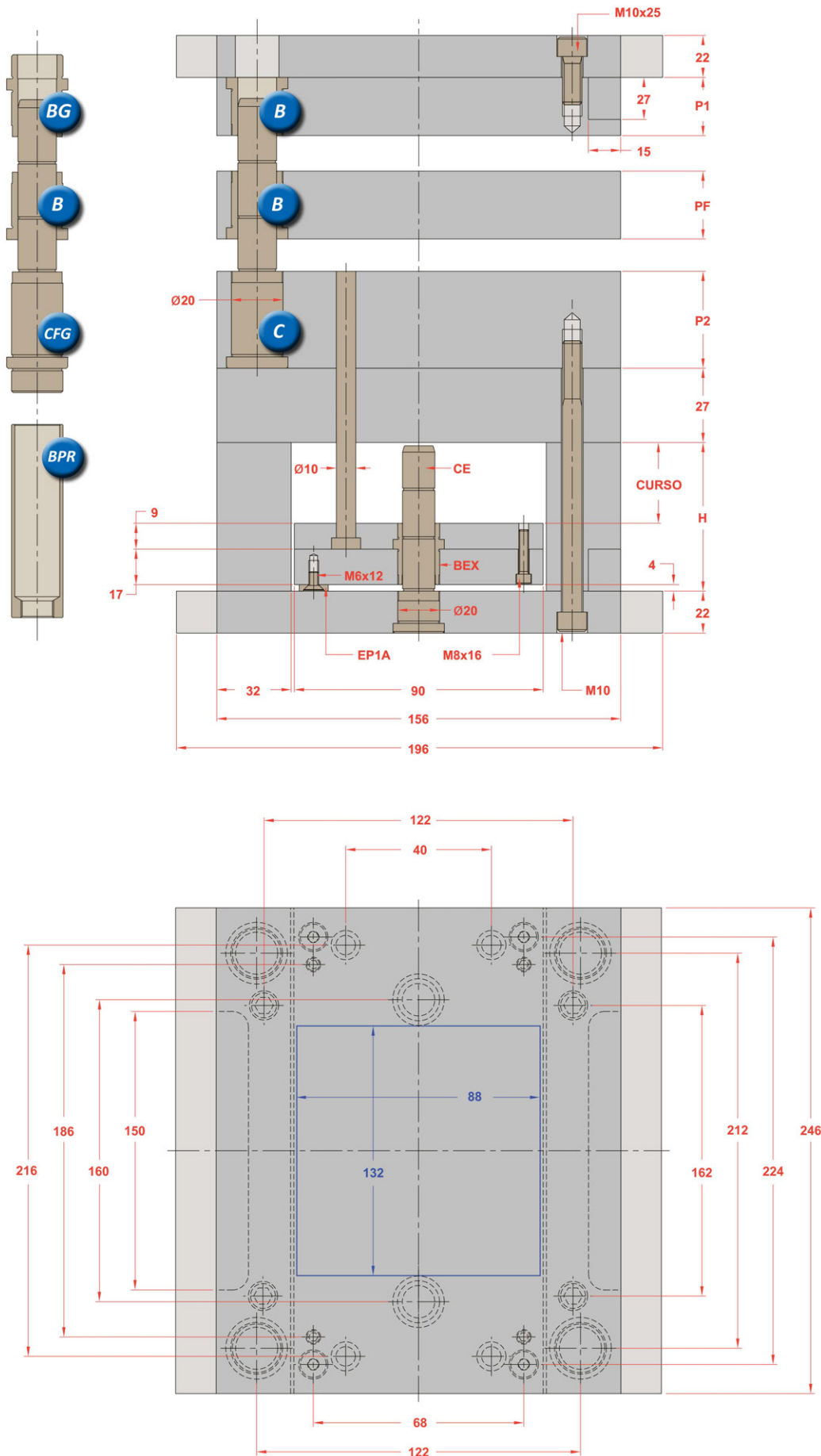
Para solicitar Colunas

Prefixo	D1	L2	L1
CF ou CFG	 	 	

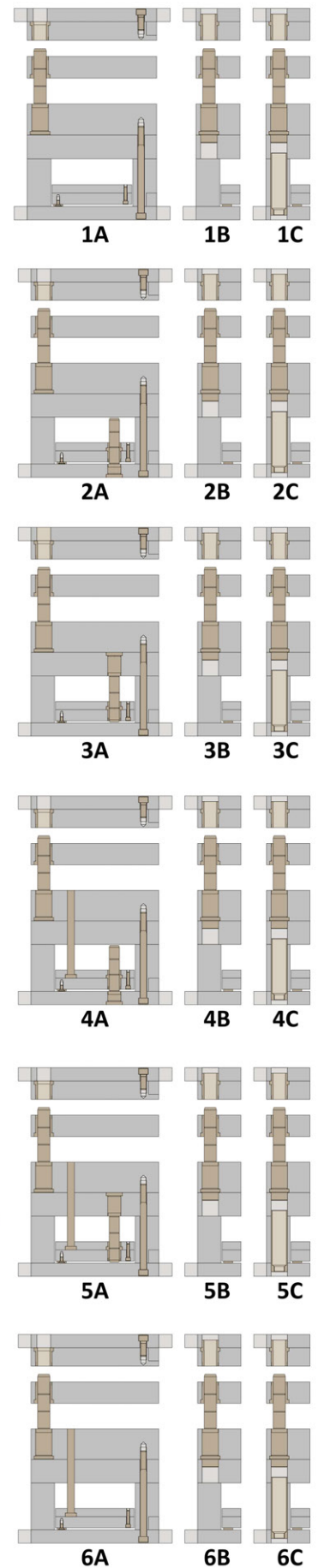
Para solicitar Buchas

Prefixo	D1	L3
B ou BG	 	

Vista Com Dimensões



Opções na Montagem



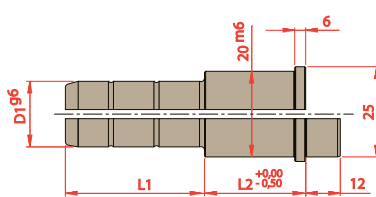
*Os novos Polimolds são fornecidos com uma coluna de diâmetro menor na ponta em substituição ao furo deslocado

Sub Série	Placas Cavidades			Componentes das Placas Cavidades					
	P1	PF	P2	Bucha P1 (1 pç)	Bucha P1 (1 pç)	Bucha PF (1 pç)	Bucha PF (3 pç)	Coluna (1 pç)	Coluna (3 pç)
1	22	22	27	B/BG 14022	B/BG 15022	B14022	B15022	CF/CFG 14027065	CF/CFG 15027065
2	27	22	27	B/BG 14027	B/BG 15027	B14022	B15022	CF/CFG 14027065	CF/CFG 15027065
3	36	22	27	B/BG 14036	B/BG 15036	B14022	B15022	CF/CFG 14027065	CF/CFG 15027065
4	46	22	27	B/BG 14046	B/BG 15046	B14022	B15022	CF/CFG 14027084	CF/CFG 15027084
5	56	22	27	B/BG 14056	B/BG 15056	B14022	B15022	CF/CFG 14027084	CF/CFG 15027084
6	66	22	27	B/BG 14066	B/BG 15066	B14022	B15022	CF/CFG 14027102	CF/CFG 15027102
7	22	27	36	B/BG 14022	B/BG 15022	B14027	B15027	CF/CFG 14036065	CF/CFG 15036065
8	27	27	36	B/BG 14027	B/BG 15027	B14027	B15027	CF/CFG 14036065	CF/CFG 15036065
9	36	27	36	B/BG 14036	B/BG 15036	B14027	B15027	CF/CFG 14036084	CF/CFG 15036084
10	46	27	36	B/BG 14046	B/BG 15046	B14027	B15027	CF/CFG 14036084	CF/CFG 15036084
11	56	27	36	B/BG 14056	B/BG 15056	B14027	B15027	CF/CFG 14036102	CF/CFG 15036102
12	66	27	36	B/BG 14066	B/BG 15066	B14027	B15027	CF/CFG 14036102	CF/CFG 15036102
13	22	36	46	B/BG 14022	B/BG 15022	B14036	B15036	CF/CFG 14046065	CF/CFG 15046065
14	27	36	46	B/BG 14027	B/BG 15027	B14036	B15036	CF/CFG 14046084	CF/CFG 15046084
15	36	36	46	B/BG 14036	B/BG 15036	B14036	B15036	CF/CFG 14046084	CF/CFG 15046084
16	46	36	46	B/BG 14046	B/BG 15046	B14036	B15036	CF/CFG 14046102	CF/CFG 15046102
17	56	36	46	B/BG 14056	B/BG 15056	B14036	B15036	CF/CFG 14046102	CF/CFG 15046102
18	66	36	46	B/BG 14066	B/BG 15066	B14036	B15036	CF/CFG 14046122	CF/CFG 15046122
19	22	46	56	B/BG 14022	B/BG 15022	B14046	B15046	CF/CFG 14056084	CF/CFG 15056084
20	27	46	56	B/BG 14027	B/BG 15027	B14046	B15046	CF/CFG 14056084	CF/CFG 15056084
21	36	46	56	B/BG 14036	B/BG 15036	B14046	B15046	CF/CFG 14056102	CF/CFG 15056102
22	46	46	56	B/BG 14046	B/BG 15046	B14046	B15046	CF/CFG 14056102	CF/CFG 15056102
23	56	46	56	B/BG 14056	B/BG 15056	B14046	B15046	CF/CFG 14056122	CF/CFG 15056122
24	66	46	56	B/BG 14066	B/BG 15066	B14046	B15046	CF/CFG 14056122	CF/CFG 15056122
25	22	56	66	B/BG 14022	B/BG 15022	B14056	B15056	CF/CFG 14066084	CF/CFG 15066084
26	27	56	66	B/BG 14027	B/BG 15027	B14056	B15056	CF/CFG 14066102	CF/CFG 15066102
27	36	56	66	B/BG 14036	B/BG 15036	B14056	B15056	CF/CFG 14066102	CF/CFG 15066102
28	46	56	66	B/BG 14046	B/BG 15046	B14056	B15056	CF/CFG 14066122	CF/CFG 15066122
29	56	56	66	B/BG 14056	B/BG 15056	B14056	B15056	CF/CFG 14066122	CF/CFG 15066122
30	66	56	66	B/BG 14066	B/BG 15066	B14056	B15056	CF/CFG 14066140	CF/CFG 15066140

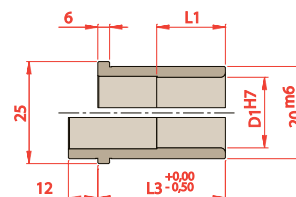
Especificação do Conjunto Extrator

Dimensões de Curso			Componentes do Conjunto Extrator				
Curso	Dim.	H	Coluna (PBI)	Coluna (PS)	Bucha	Bucha Guia	Parafuso
1	16	46	CE 15022046	CE 15027046	BEX 1526	BPR 15064	M10x100
2	26	56	CE 15022056	CE 15027056	BEX 1526	BPR 15074	M10x110
3	46	76	CE 15022076	CE 15027076	BEX 1526	BPR 15094	M10x130

Componentes



D1	L2	L1				
		065	084	102	122	140
14 15	027					
	036					
	046					
	056					
	066					



D1	L1	L3
14 15	022	022
	027	027
	036	036
	046	046
	050	056
	050	066

Para solicitar Colunas

Prefixo	D1	L2	L1
CF ou CFG	 	 	

Para solicitar Buchas

Prefixo	D1	L3
B ou BG	 	